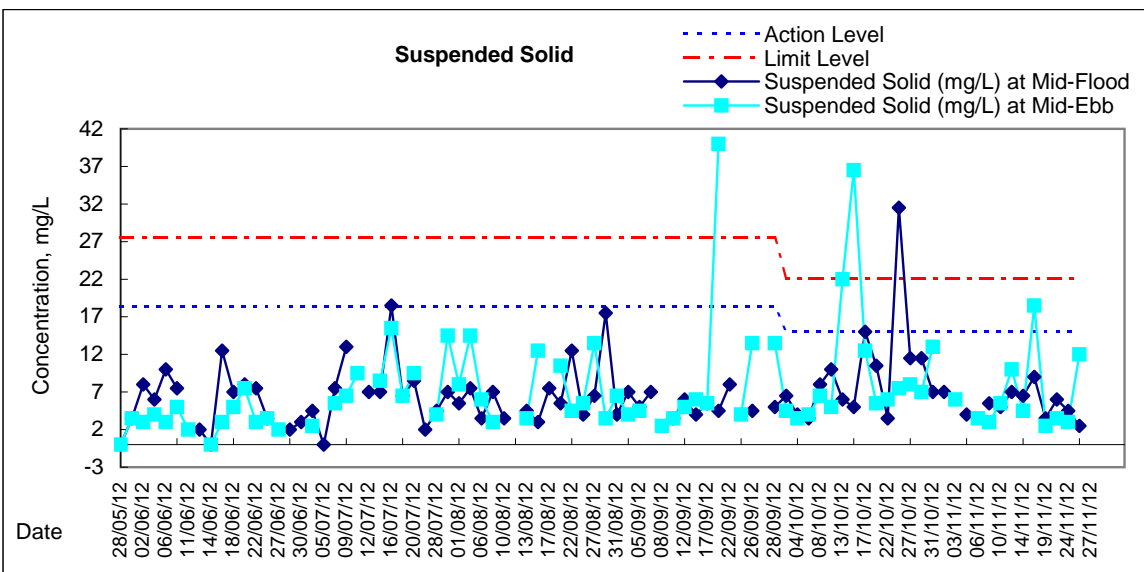
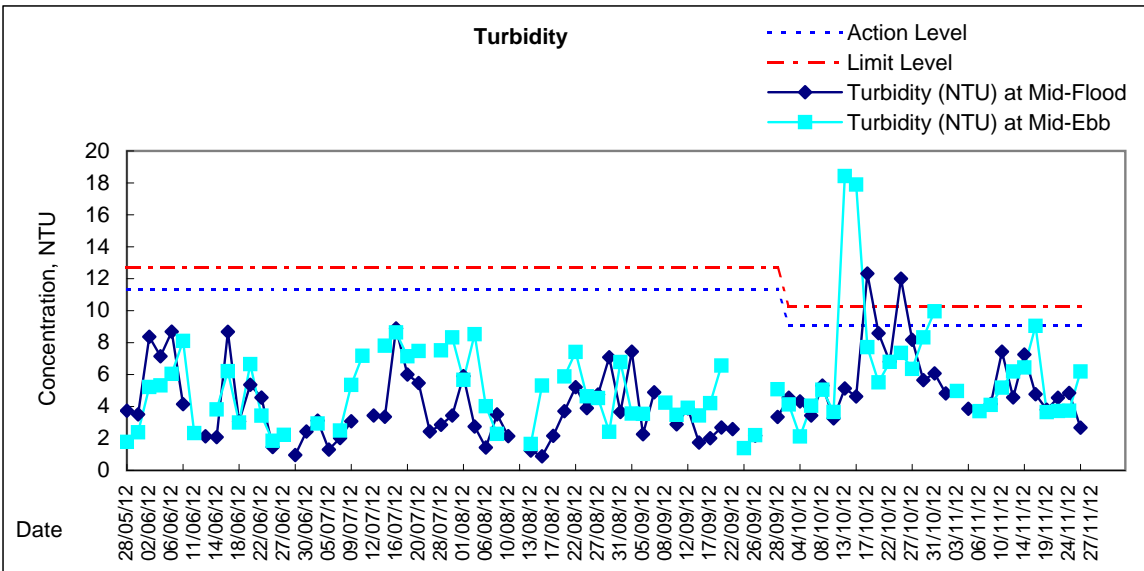
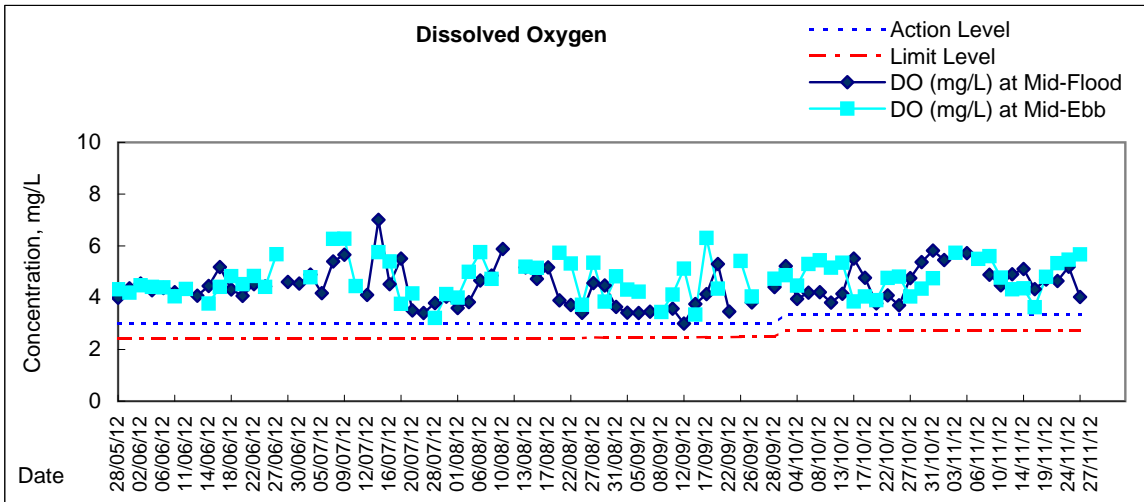


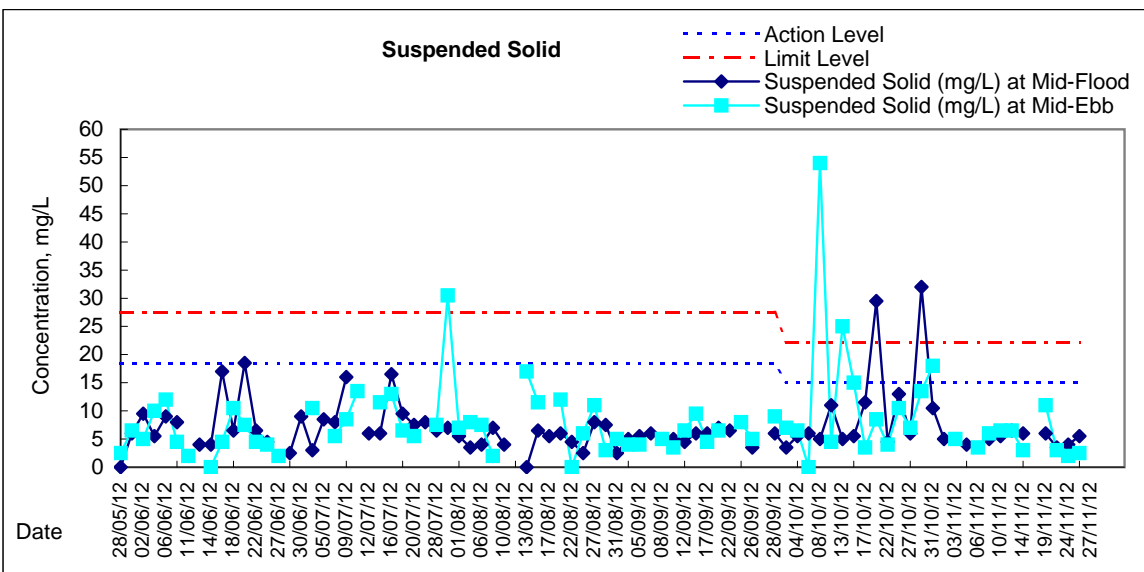
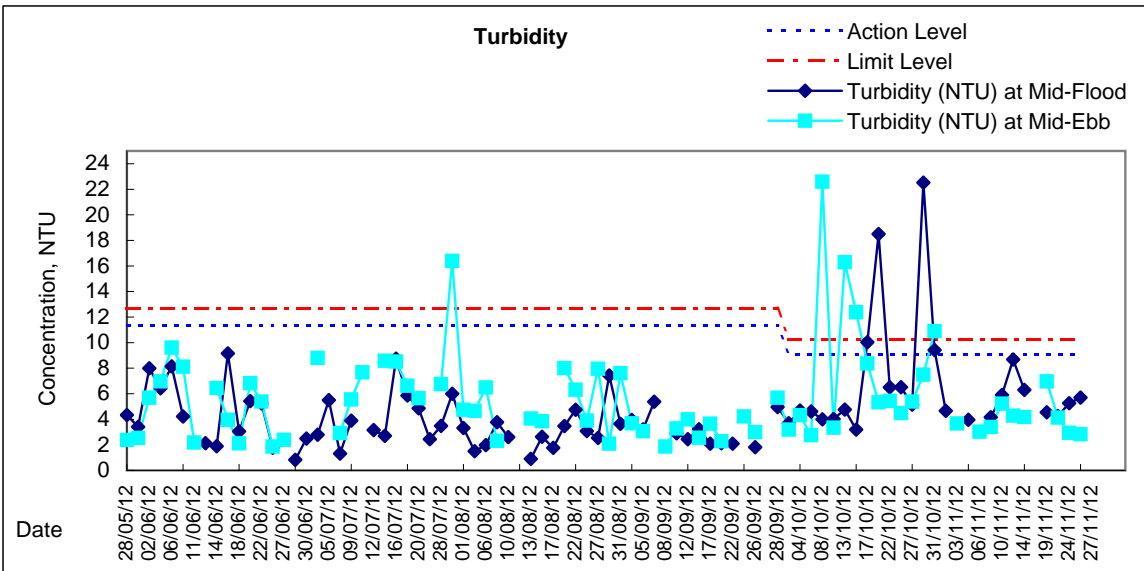
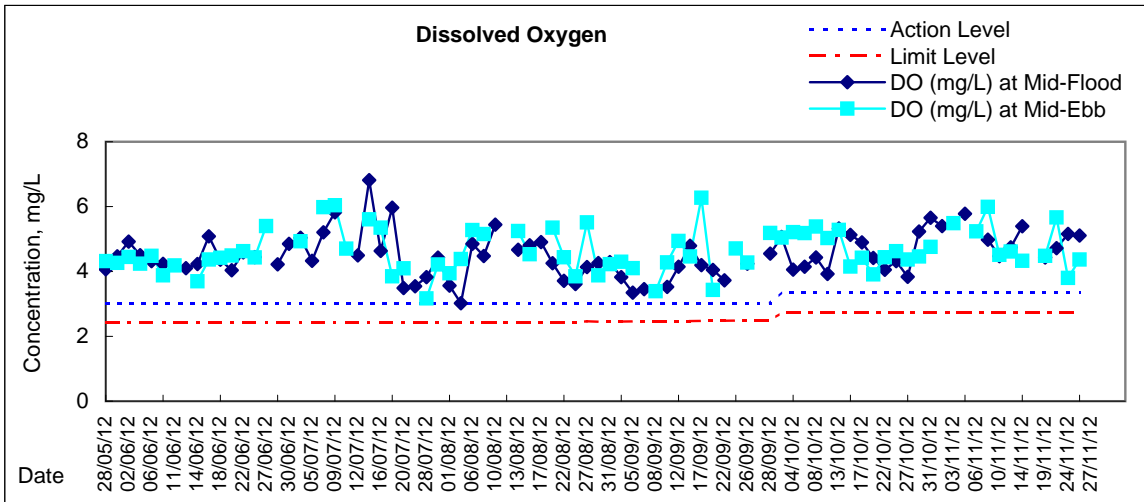


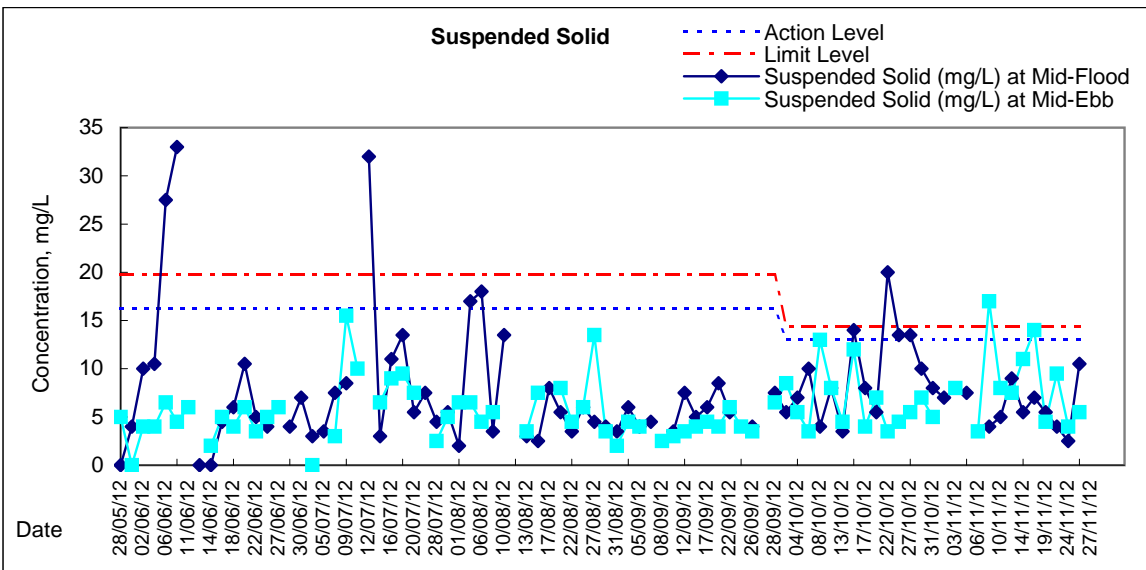
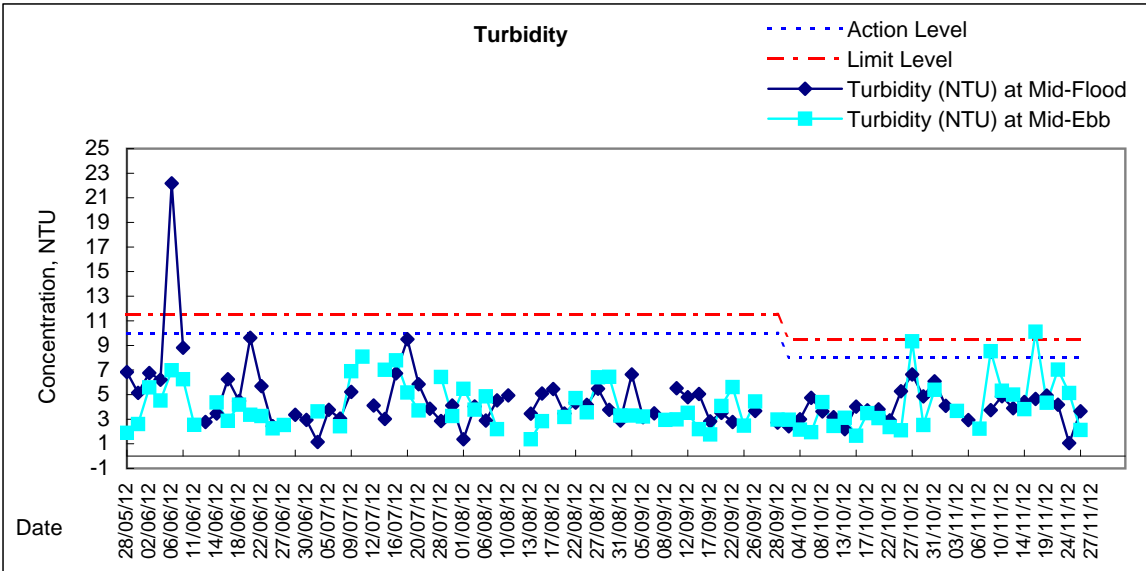
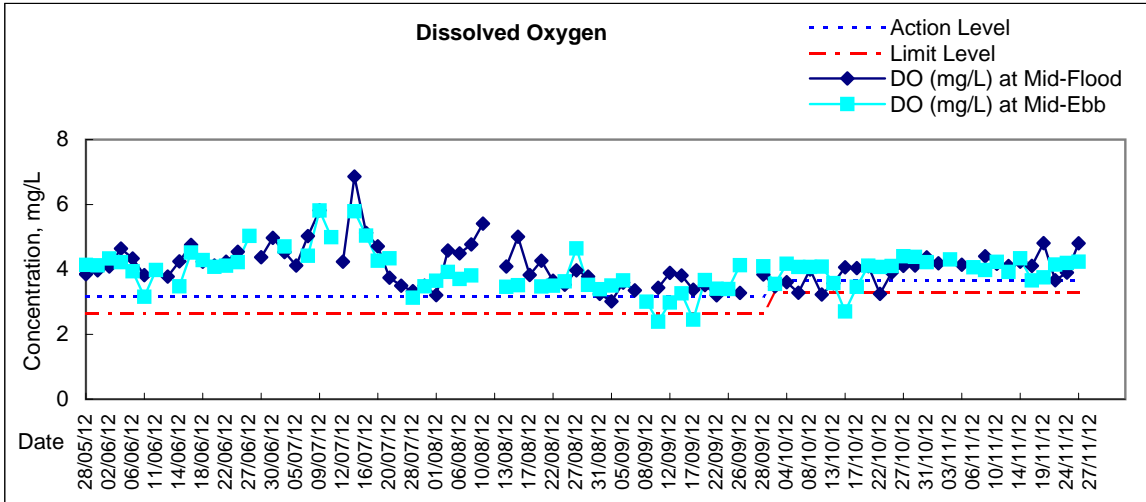
Graphic Presentation of Water Quality Result of C5e - SHKC (Eastern)

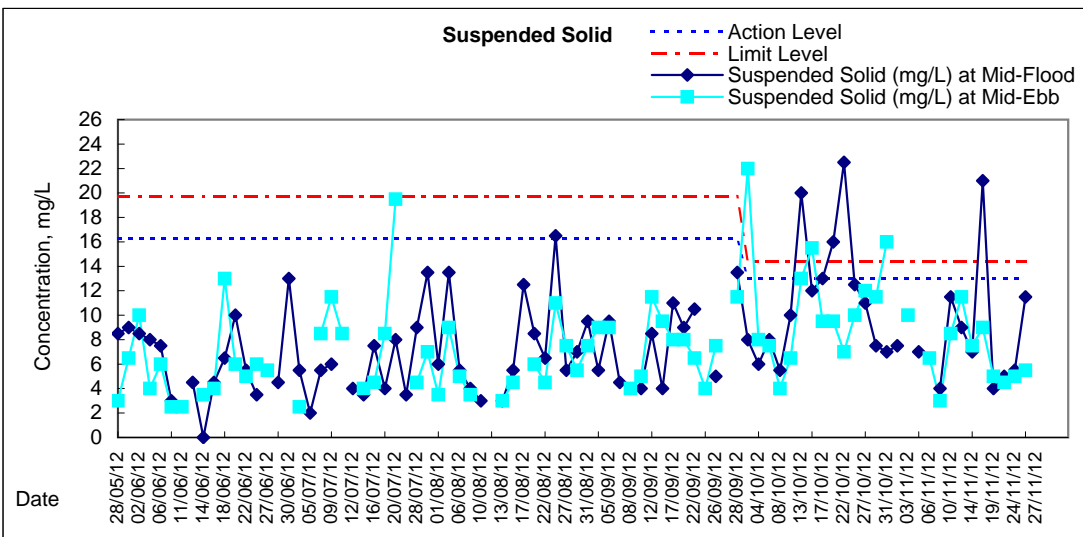
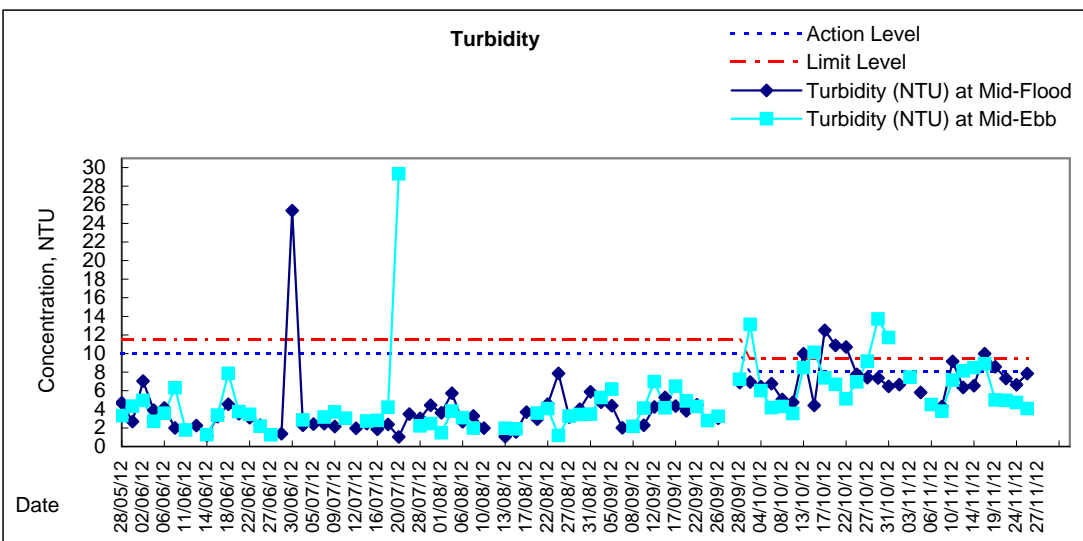
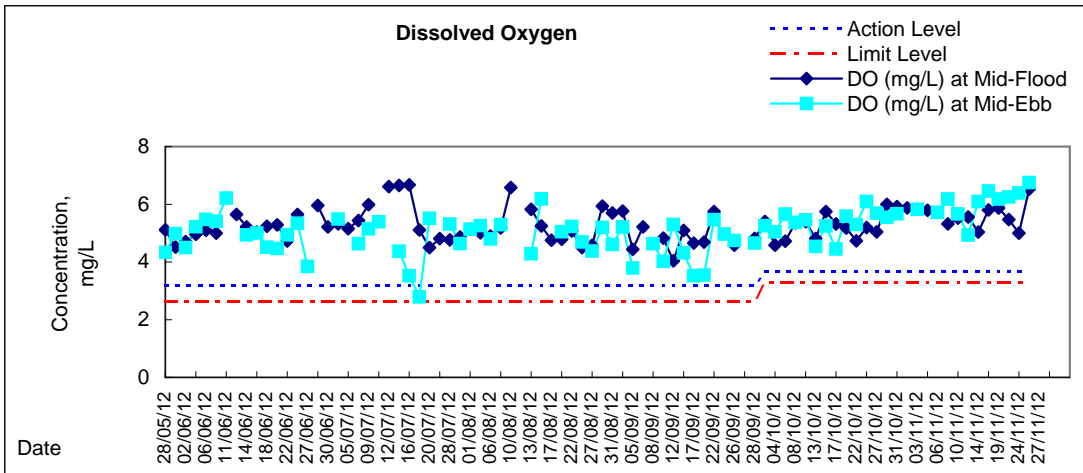




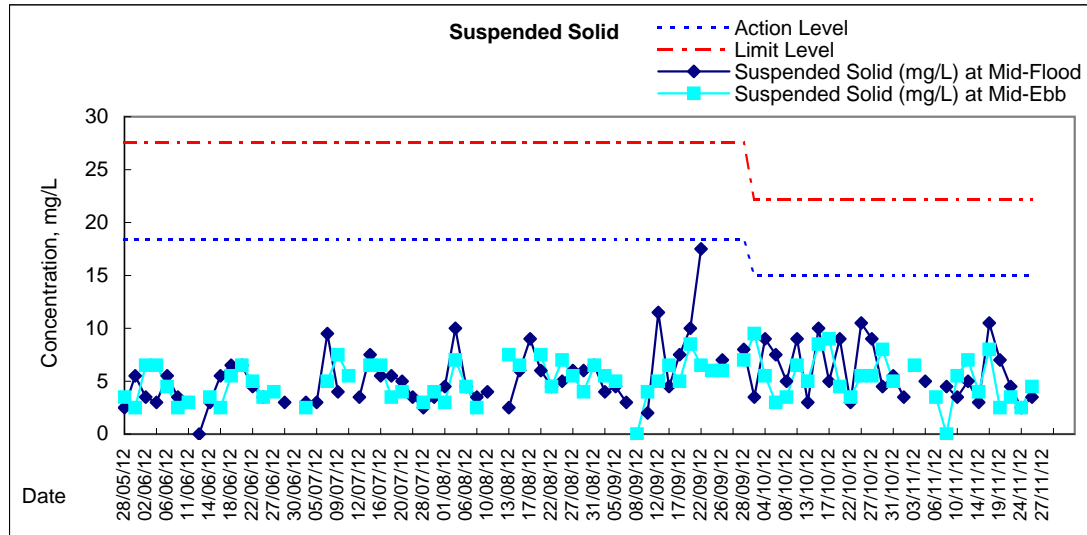
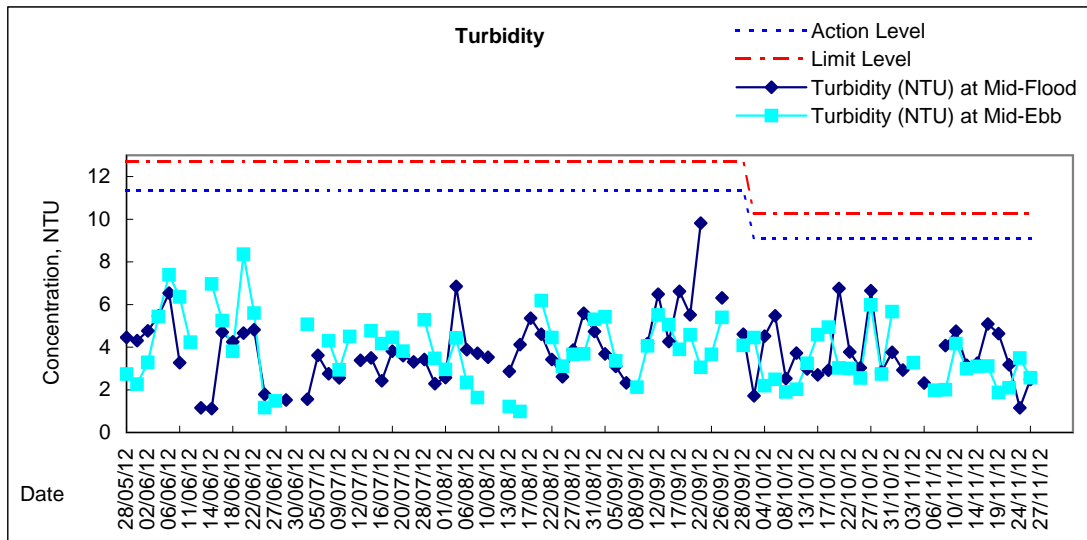
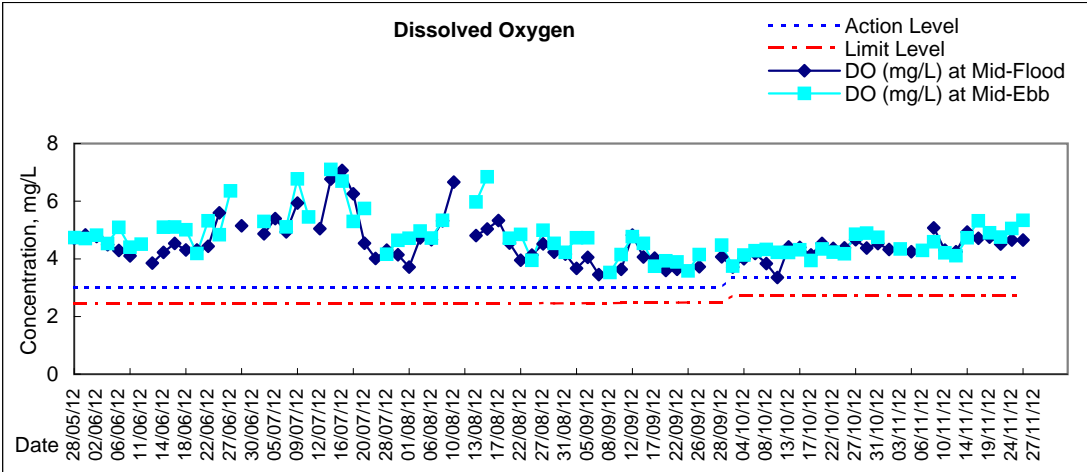
Graphic Presentation of Water Quality Result of C5w - SHKC (Western)

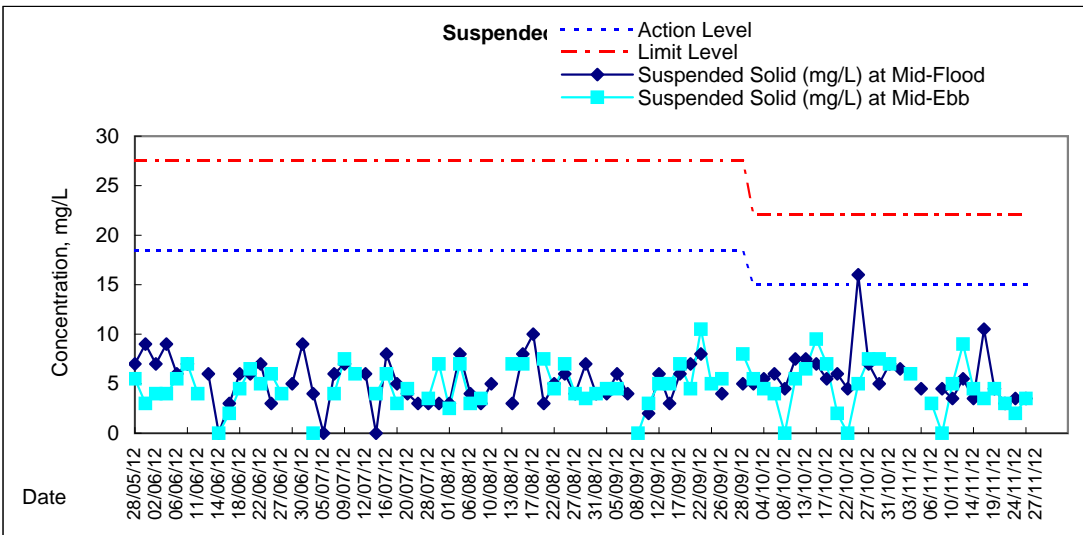
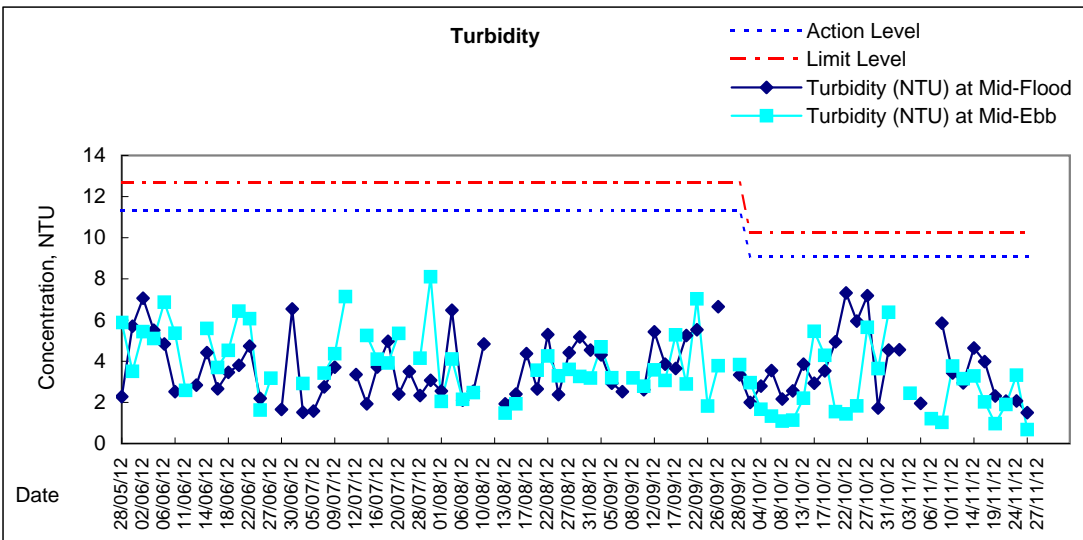
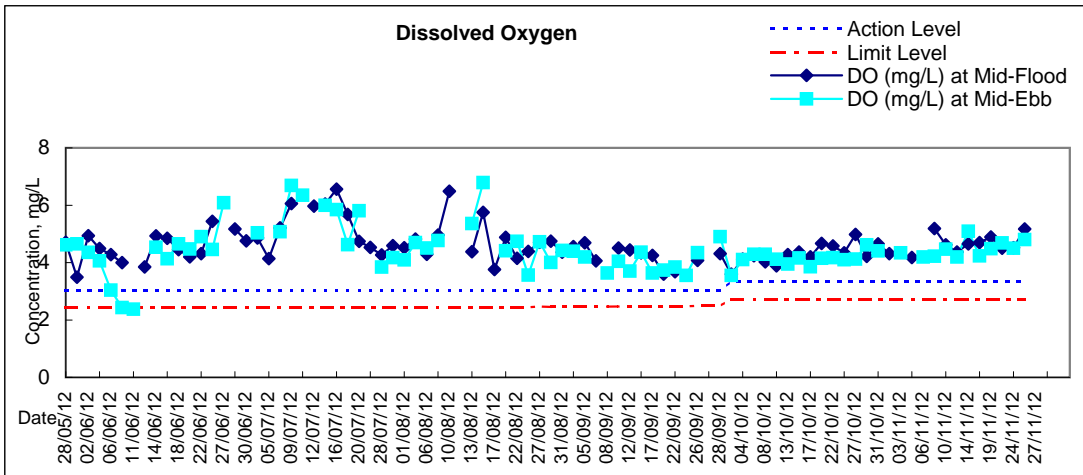


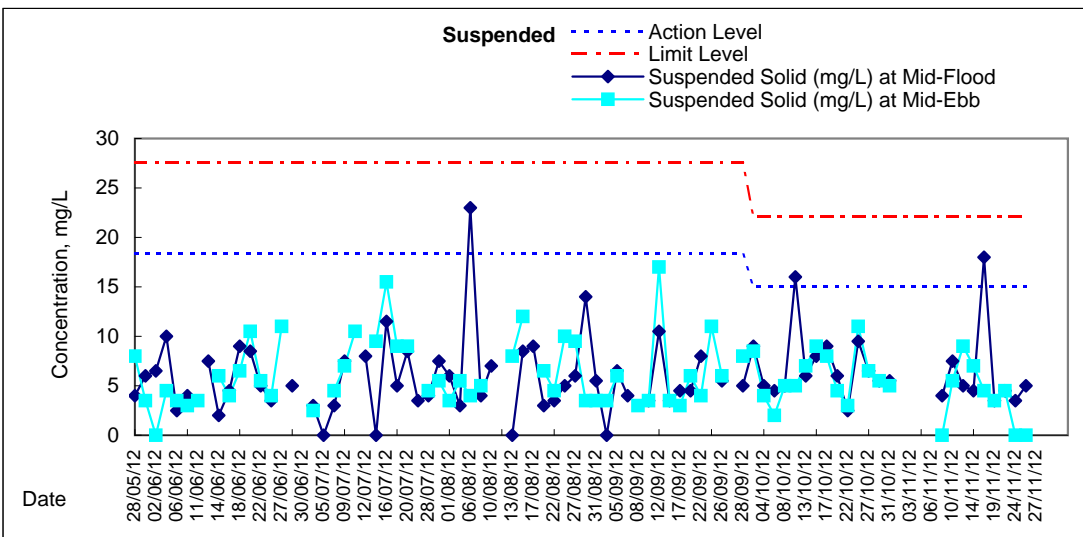
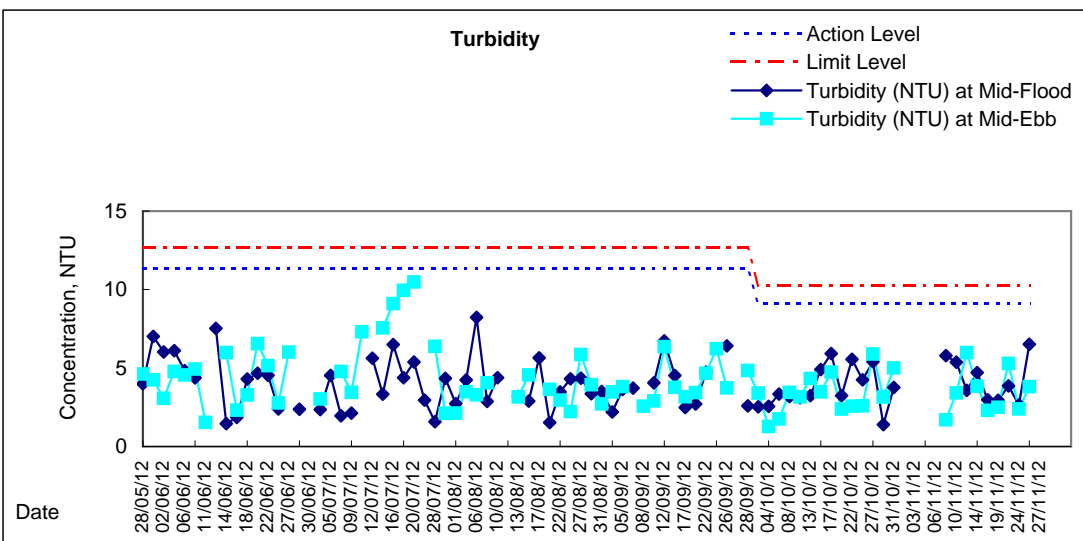
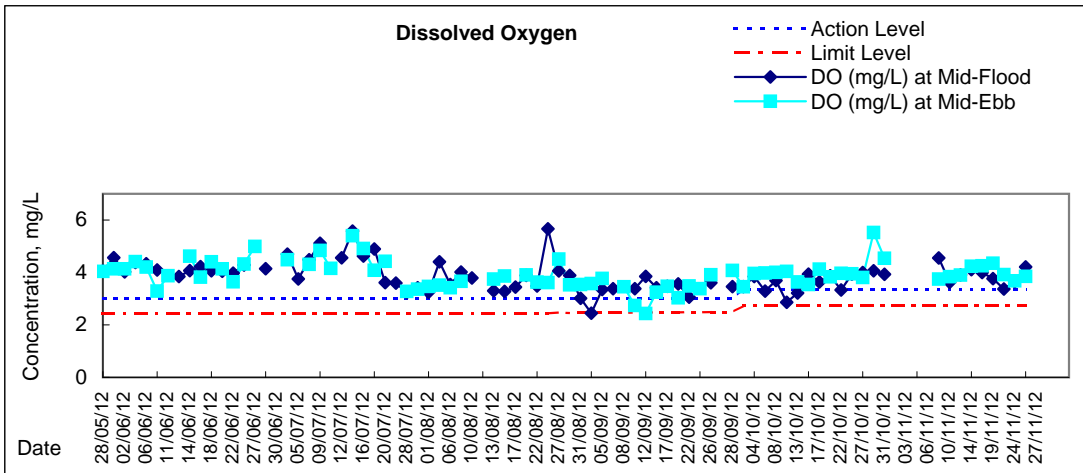




Graphic Presentation of Water Quality Result of C1 - HKCEC

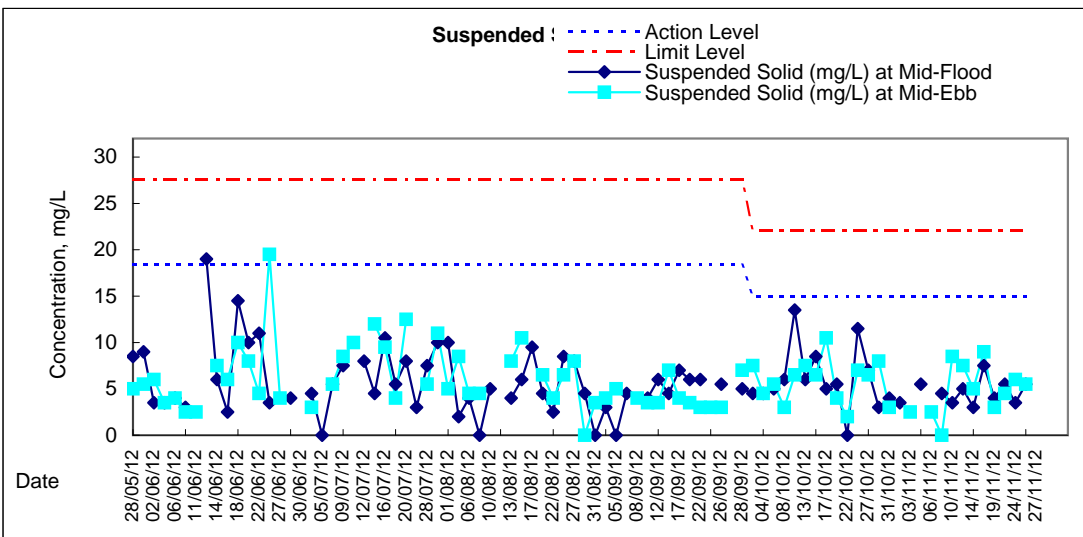
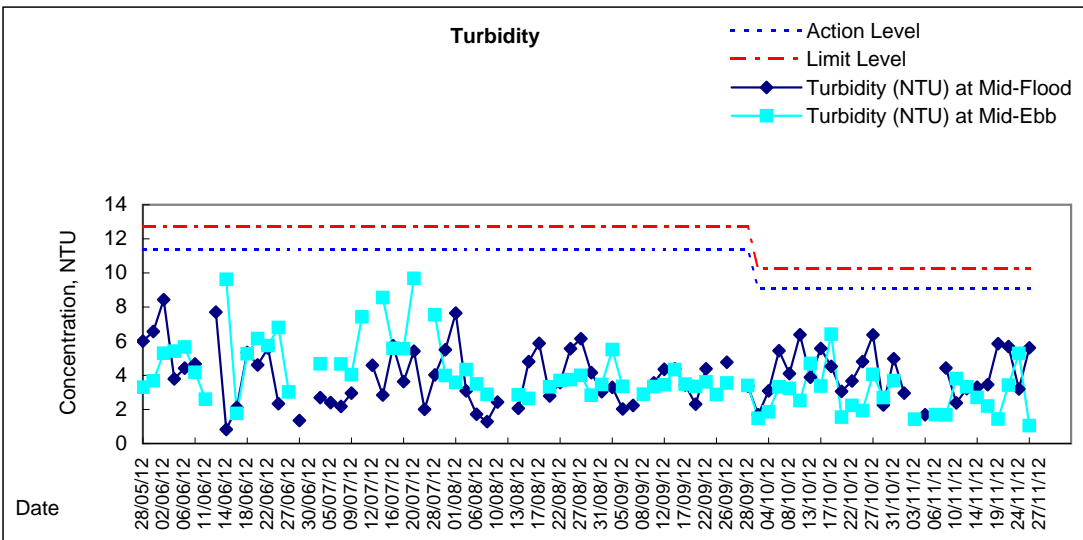
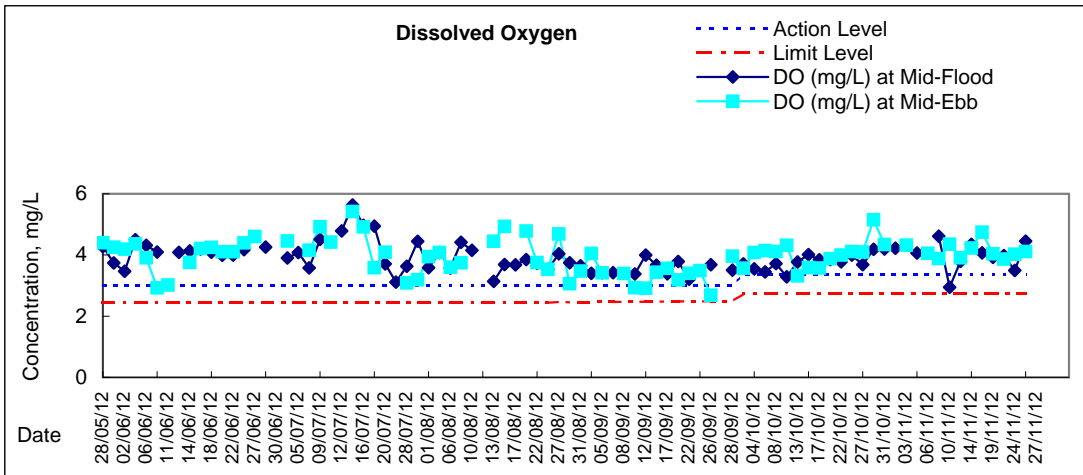






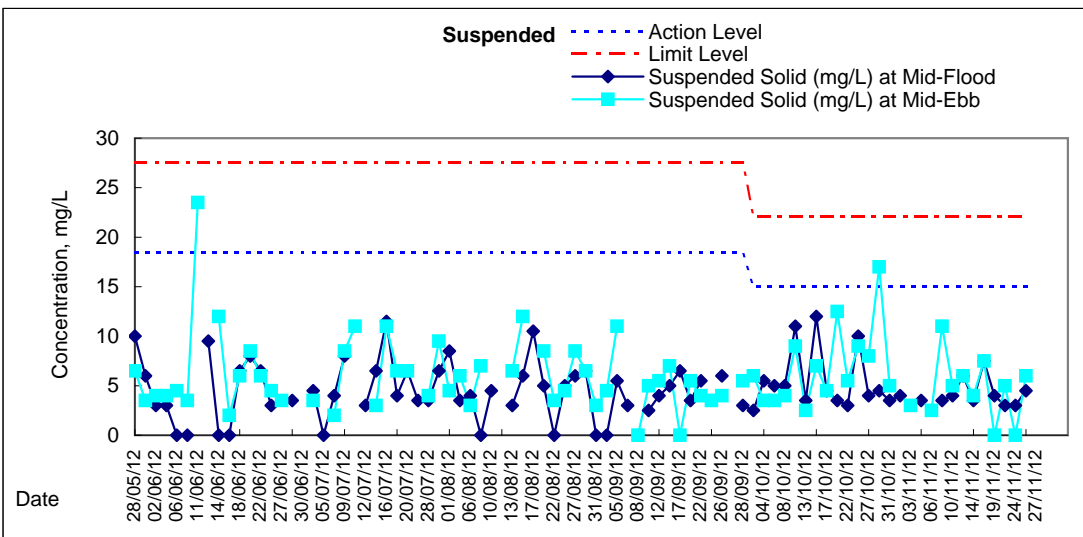
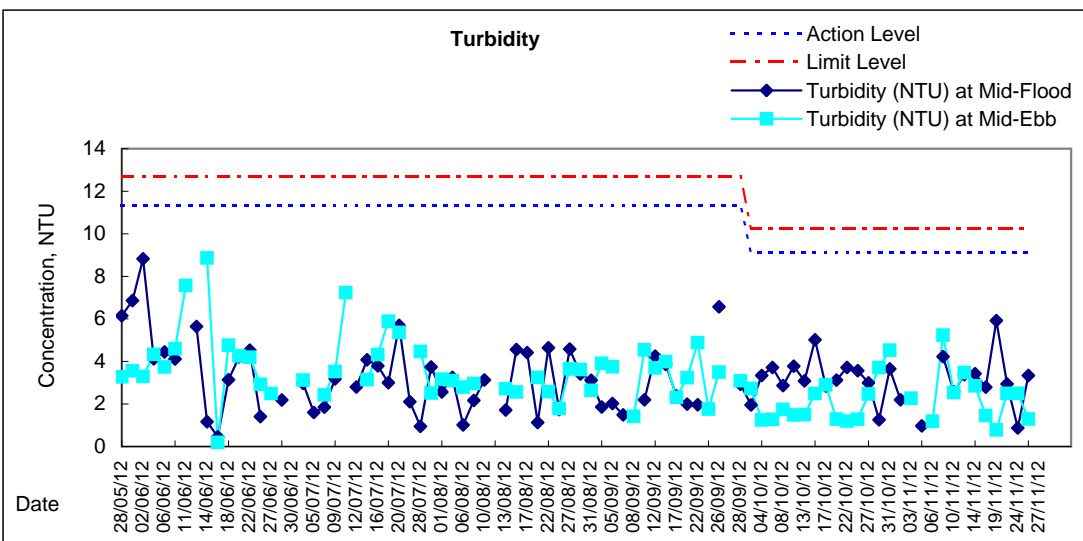
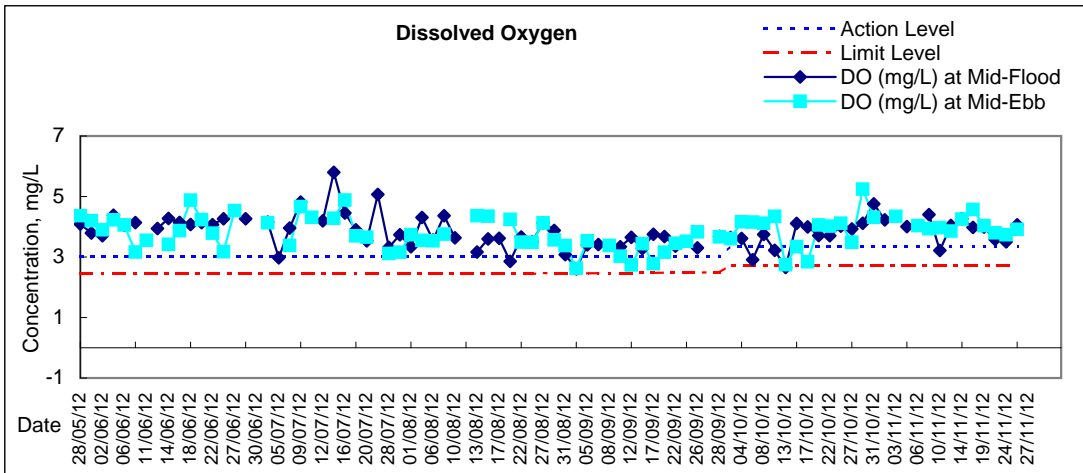


Graphic Presentation of Water Quality Result of C4e - WCT and GEC (Eastern)

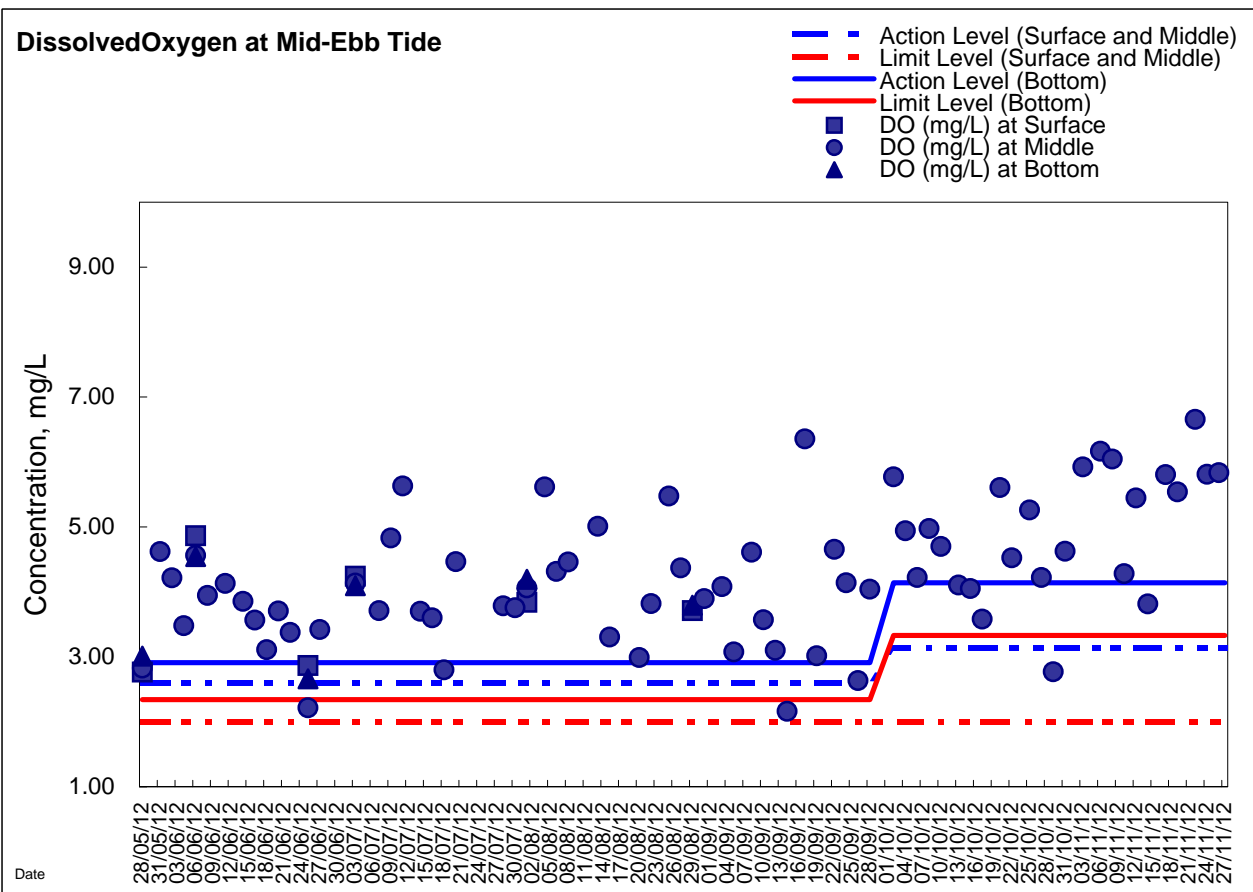
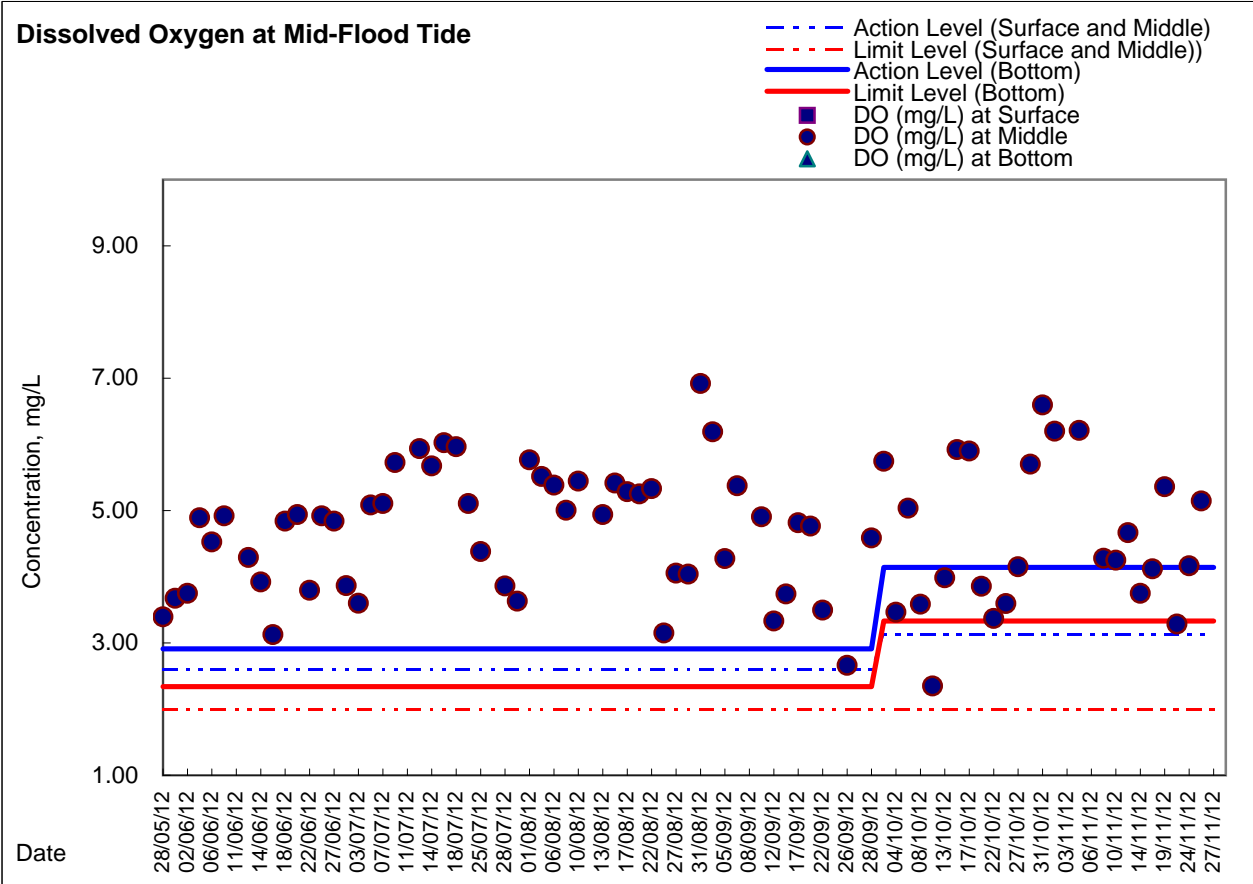




Graphic Presentation of Water Quality Result of C4w - WCT and GEC (Western)

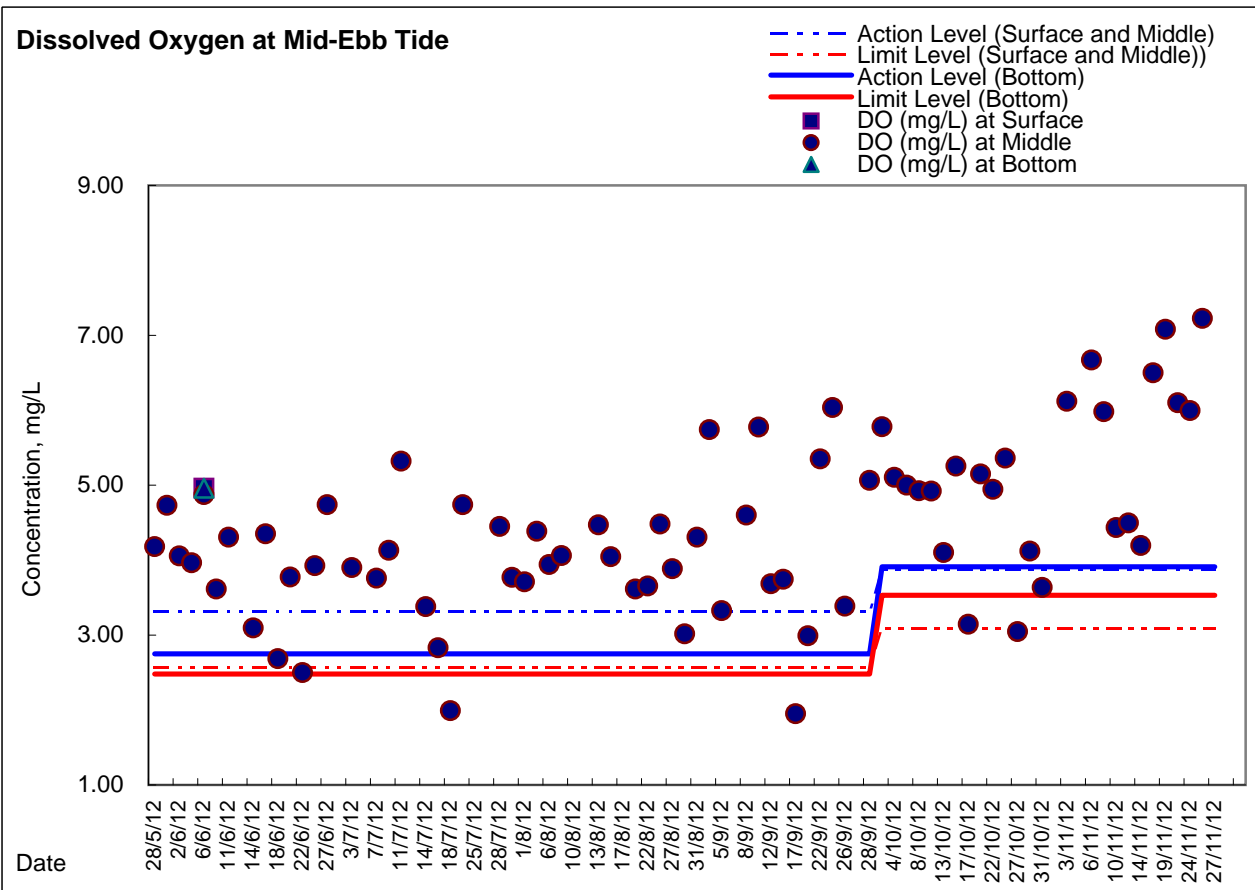
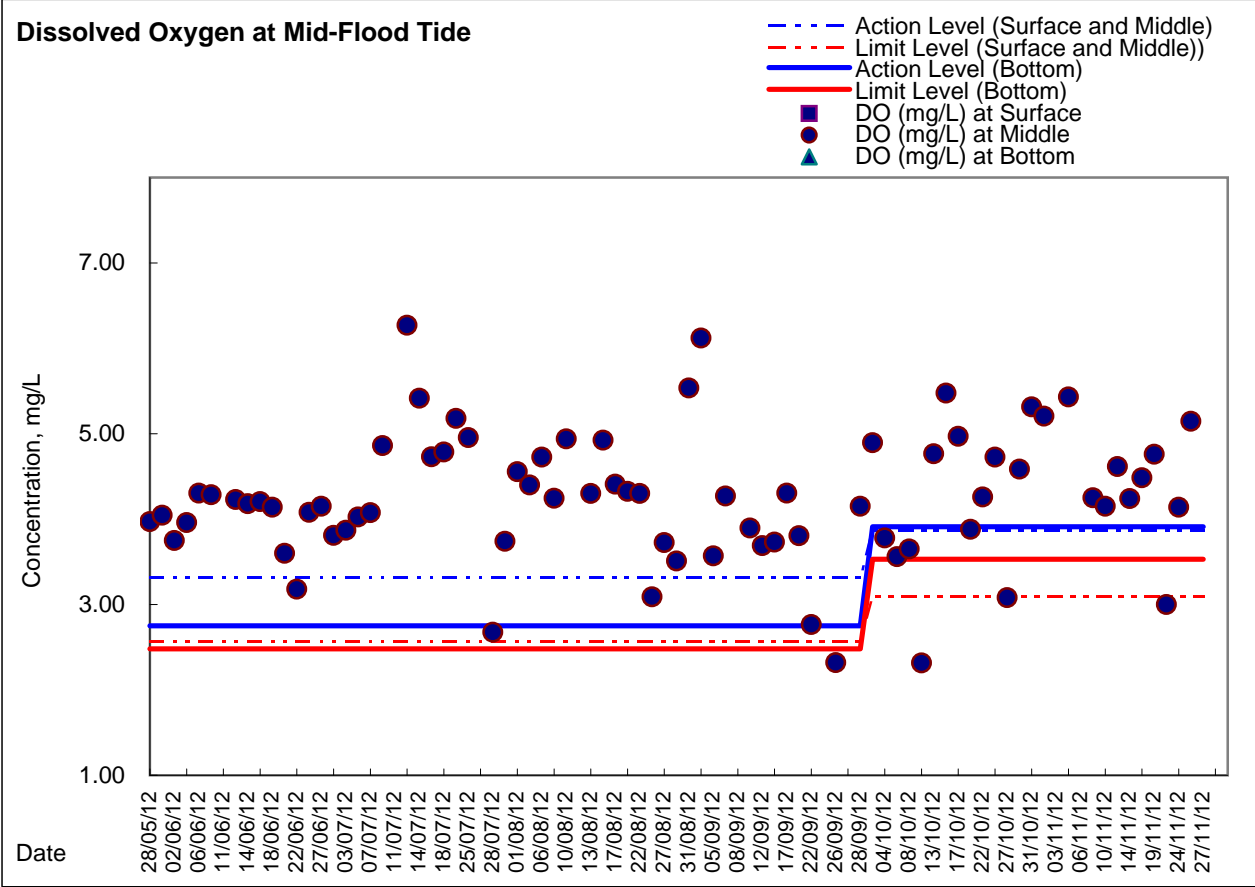


Graphic Presentation of Enhanced Water Monitoring Results (DO) at C6 - Excelsior Hotel

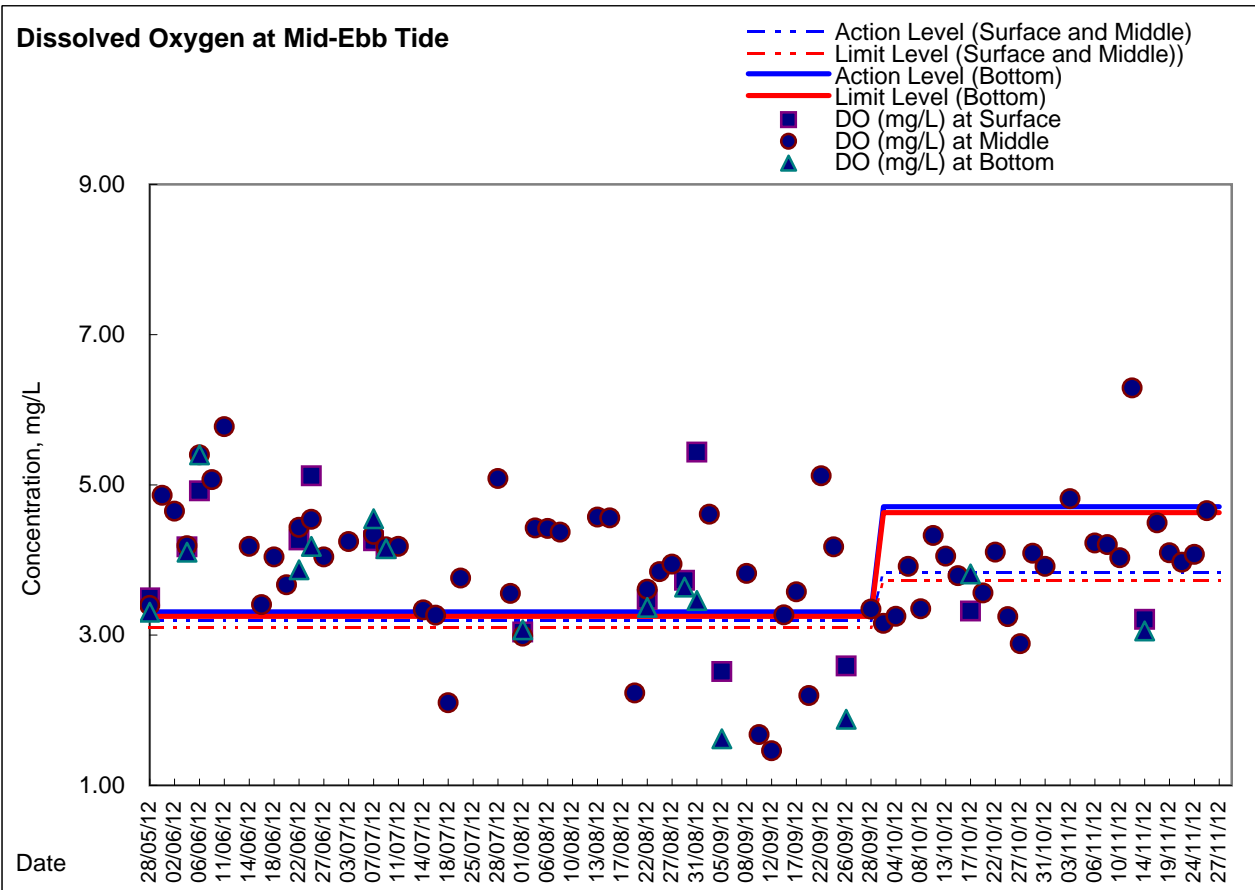
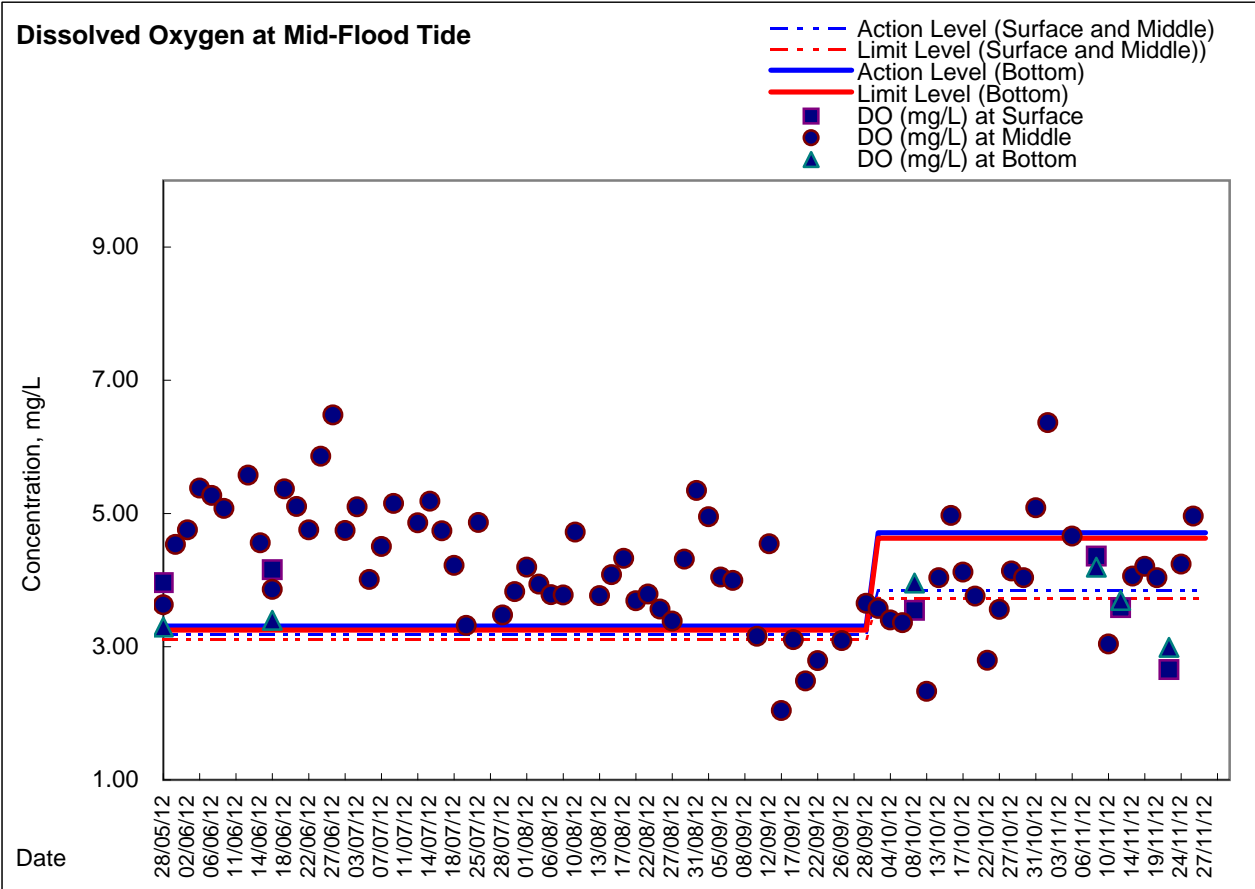




Graphic Presentation of Enhanced Water Monitoring Results (DO) at C7 - Windsor House



**Graphic Presentation of Enhanced Water Monitoring Results (DO) at Ex-WPCWA SW
- South-western corners of ex-Public Cargo Works Area**



**Graphic Presentation of Enhanced Water Monitoring Results (DO) at Ex-WPCWA SE
- South-eastern corners of ex-Public Cargo Works Area**

